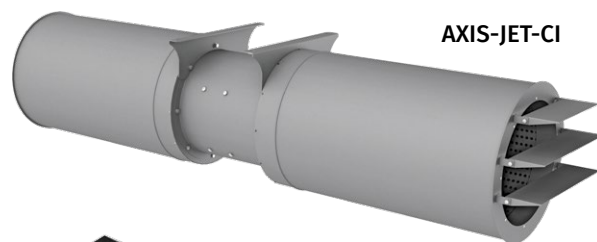


AXIS-JET

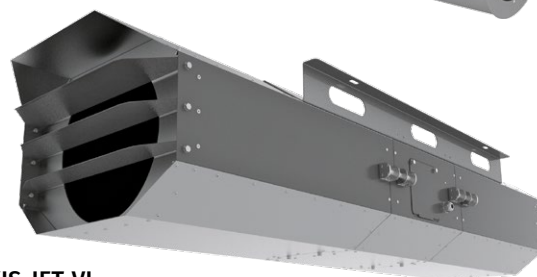
Jet axial fans

Use

- The **Axis-Jet** axial fans are designed for general purpose ventilation of underground and semiopened parking, ventilation of tunnels, smoke extraction in case of fire as a part of smoke extract system. The fans generate a high-speed and high-pressure directed air jet.
- Temperatures of the transported medium: in continuous operation up to +55 °C; in smoke extraction mode: 300 °C/2 hrs and 400 °C/2 hrs
- Functionality. Power. Efficiency.



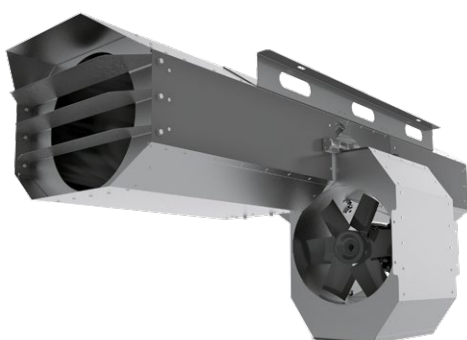
AXIS-JET-CI



AXIS-JET-VI

Design

- The casing of the **Axis-Jet** fan is made of polymer coated steel. The fans are available in two casing versions: cylindrical and octagonal.
- The casing includes inner brackets for motor fixation. These brackets act as directing vanes and distribute air flow uniformly, thus increasing aerodynamic performances of the fan. The fan has a sound insulation of mineral wool.
- The fan in an octagonal casing **Axis-Jet-VI** has a reduced height, a hinged hatch for electrical installation with captive bolts and a detachable middle part for maintenance.



Motor

- Three-phase asynchronous short-circuit rotor motor is installed inside the fan casing. Motor ingress protection rating is IP55. The motor design ensures operation of the fan in the smoke extract systems and/or general ventilation systems in unidirectional and reversible modes. The motors are designed for 400 V mains voltage and 50 Hz mains frequency.

Impeller

- The dynamically balanced impeller is made of cast aluminium alloy (for fans of smoke extraction systems) or of glass-fiber reinforced polyamide (for fans of general industrial use).
- The reversible fans are equipped with 100 % reversible two-directional impeller.

Mounting

- The **Axis-Jet** fans are designed for horizontal ceiling mounting and fixation by means of the supplied fixing brackets attached to the fan casing.

Modifications

- Unidirectional single-speed type (U)
- Unidirectional double-speed type (U)
- Reversible single-speed (R)
- Reversible double-speed (R)

The fans with the fire resistance rating 200 °C/2 hrs can be manufactured on special request.

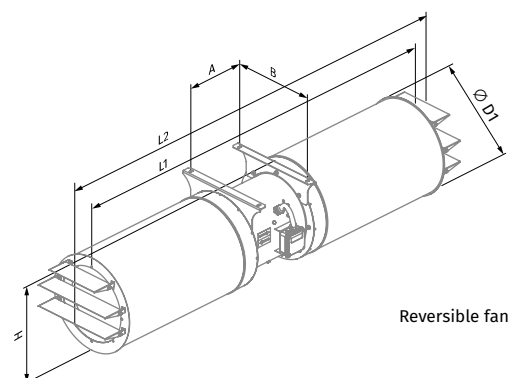
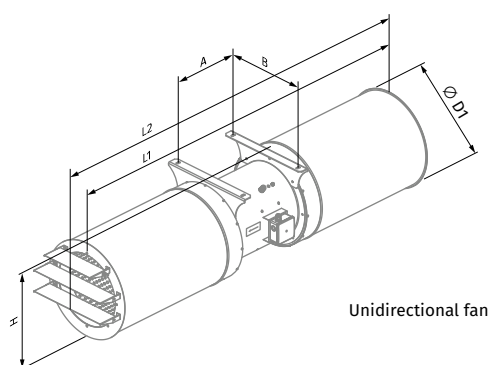
Designation key

| Model | Casing type | Casing insulation | Diameter [mm] | Motor | Number of poles | Air flow | Fire resistance limit/hrs |
|-----------------------------------|--|---|--|---|---|--|---|
| AXIS-JET: jet axial fan | - C: round V: octagonal | _: without sound-insulation I: sound-insulated casing | - 315; 355; 400; 450; 500; 560; 630 | _: standard motor M, S: model with a high-power motor | - 2 2/4 (applicable for double-speed motors) | - U: unidirectional R: reversible | - _: max. +55 °C 300/2: 300 °C/2 h 400/2: 400 °C/2 h |

Overall dimensions [mm]

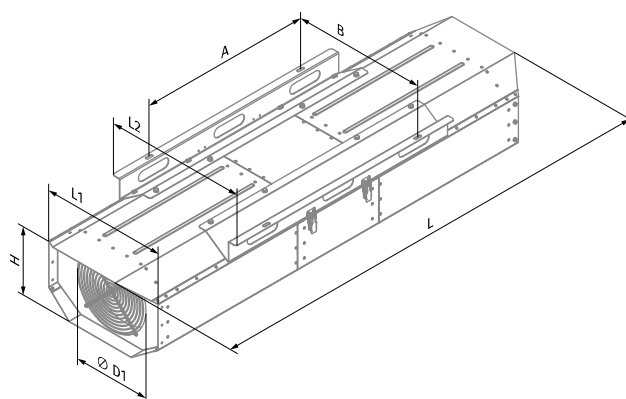
AXIS-JET-CI

| Model | Ø D1 | A | B | H | L1 | L2 | Weight [kg] |
|-----------------------|------|-----|-----|-----|------|------|-------------|
| Unidirectional | | | | | | | |
| Axis-Jet-CI-315-U | 414 | 302 | 355 | 425 | 1654 | 1763 | 40 |
| Axis-Jet-CI-355-U | 467 | 302 | 420 | 482 | 1954 | 2079 | 50 |
| Axis-Jet-CI-400-U | 515 | 351 | 460 | 525 | 2004 | 2129 | 65 |
| Axis-Jet-CI-450-U | 565 | 351 | 500 | 575 | 2004 | 2129 | 85 |
| Axis-Jet-CI-500-U | 603 | 371 | 580 | 620 | 2004 | 2145 | 110 |
| Axis-Jet-CI-560-U | 663 | 446 | 620 | 678 | 2093 | 2247 | 155 |
| Axis-Jet-CI-630-U | 733 | 550 | 710 | 748 | 2193 | 2357 | 245 |
| Reversible | | | | | | | |
| Axis-Jet-CI-315-R | 414 | 302 | 355 | 425 | 1654 | 1872 | 40 |
| Axis-Jet-CI-355-R | 467 | 302 | 420 | 482 | 1954 | 2202 | 50 |
| Axis-Jet-CI-400-R | 515 | 351 | 460 | 525 | 2004 | 2253 | 65 |
| Axis-Jet-CI-450-R | 565 | 351 | 500 | 575 | 2004 | 2253 | 85 |
| Axis-Jet-CI-500-R | 603 | 371 | 580 | 620 | 2004 | 2290 | 110 |
| Axis-Jet-CI-560-R | 663 | 446 | 620 | 678 | 2093 | 2400 | 155 |
| Axis-Jet-CI-630-R | 733 | 550 | 710 | 748 | 2193 | 2520 | 245 |



AXIS-JET-VI

| Model | Ø D1 | A | B | H | L | L1 | L2 | Weight [kg] |
|-----------------------|------|-----|-----|-----|------|-----|-----|-------------|
| Unidirectional | | | | | | | | |
| Axis-Jet-VI-315-U | 315 | 700 | 542 | 347 | 1846 | 507 | 572 | 58 |
| Axis-Jet-VI-355-U | 355 | 700 | 583 | 388 | 2046 | 546 | 613 | 75 |
| Axis-Jet-VI-400-U | 400 | 750 | 632 | 434 | 2296 | 590 | 667 | 95 |
| Reversible | | | | | | | | |
| Axis-Jet-VI-315-R | 315 | 700 | 542 | 347 | 1846 | 507 | 572 | 58 |
| Axis-Jet-VI-355-R | 355 | 700 | 583 | 388 | 2046 | 546 | 613 | 75 |
| Axis-Jet-VI-400-R | 400 | 750 | 632 | 434 | 2296 | 590 | 667 | 95 |



Technical data

AXIS-JET-CI

| Ø [mm] | Air flow direction | Number of speeds | Model | Power [kW] | Max. air flow [m³/h] | Fan pull [N] | Air speed [m/s] | RPM | Operating temperature [°C] | Sound pressure LpA, dB in 3 m |
|--------|--------------------|------------------|------------------------------|------------|----------------------|--------------|-----------------|-----------|----------------------------|-------------------------------|
| 315 | Unidirectional | 1 | Axis-Jet-CI-315-2-U | 0.55 | 4520 | 26 | 17.2 | 2880 | -25...+55 °C | 63 |
| | | | Axis-Jet-CI-315-2-U-300/2 | | | | | | 300 °C/2 h* | 63 |
| | | | Axis-Jet-CI-315-2-U-400/2 | | 3250 | 14 | 12.4 | | 400 °C/2 h* | 63 |
| | | | Axis-Jet-CI-315M-2-U | 0.75 | 4990 | 32 | 19 | 2880 | -25...+55 °C | 64 |
| | | | Axis-Jet-CI-315M-2-U-300/2 | | | | | | 300 °C/2 h* | 64 |
| | | | Axis-Jet-CI-315M-2-U-400/2 | | 3590 | 17 | 13.6 | | 400 °C/2 h* | 65 |
| | | 2 | Axis-Jet-CI-315-2/4-U | 0.55/0.11 | 4520/2260 | 26/7 | 17.2/8.6 | 2880/1440 | -25...+55 °C | 63/48 |
| | | | Axis-Jet-CI-315-2/4-U-300/2 | | | | | | 300 °C/2 h* | 63/48 |
| | | | Axis-Jet-CI-315-2/4-U-400/2 | | 3250/1630 | 14/4 | 12.4/6.18 | | 400 °C/2 h* | 63/48 |
| | | | Axis-Jet-CI-315M-2/4-U | 0.8/0.2 | 4990/2490 | 32/8 | 19/9.5 | 2880/1440 | -25...+55 °C | 64/49 |
| | | | Axis-Jet-CI-315M-2/4-U-300/2 | | | | | | 300 °C/2 h* | 64/49 |
| | | | Axis-Jet-CI-315M-2/4-U-400/2 | | 3590/1790 | 17/5 | 13.6/6.8 | | 400 °C/2 h* | 65/50 |
| | Reversible | 1 | Axis-Jet-CI-315-2-R | 0.55 | 4190 | 23 | 15.9 | 2880 | -25...+55 °C | 67 |
| | | | Axis-Jet-CI-315-2-R-300/2 | | | | | | 300 °C/2 h* | 67 |
| | | | Axis-Jet-CI-315-2-R-400/2 | | 3010 | 12 | 11.4 | | 400 °C/2 h* | 68 |
| | | 2 | Axis-Jet-CI-315-2/4-R | 0.55/0.11 | 4180/2100 | 23/6 | 15.9/7.9 | 2880/1440 | -25...+55 °C | 67/52 |
| | | | Axis-Jet-CI-315-2/4-R-300/2 | | | | | | 300 °C/2 h* | 67/52 |
| | | | Axis-Jet-CI-315-2/4-R-400/2 | | 3010/1510 | 12/3 | 11.4/5.7 | | 400 °C/2 h* | 68/53 |
| 355 | Unidirectional | 1 | Axis-Jet-CI-355-2-U | 0.75 | 5830 | 34 | 17.3 | 2880 | -25...+55 °C | 65 |
| | | | Axis-Jet-CI-355-2-U-300/2 | | | | | | 300 °C/2 h* | 65 |
| | | | Axis-Jet-CI-355-2-U-400/2 | | 4880 | 24 | 14.5 | | 400 °C/2 h* | 65 |
| | | 2 | Axis-Jet-CI-355M-2-U | 1.1 | 6740 | 45 | 20.0 | 2880 | -25...+55 °C | 64 |
| | | | Axis-Jet-CI-355M-2-U-300/2 | | | | | | 300 °C/2 h* | 64 |
| | | | Axis-Jet-CI-355M-2-U-400/2 | | 5360 | 29 | 15.9 | | 400 °C/2 h* | 67 |
| | | | Axis-Jet-CI-355-2/4-U | 0.8/0.2 | 5830/3000 | 34/9 | 17.3/8.9 | 2880/1440 | -25...+55 °C | 65/50 |
| | | | Axis-Jet-CI-355-2/4-U-300/2 | | | | | | 300 °C/2 h* | 65/50 |
| | | | Axis-Jet-CI-355-2/4-U-400/2 | | 4880/2440 | 24/6 | 14.5/7.3 | | 400 °C/2 h* | 65/50 |
| | | Reversible | Axis-Jet-CI-355M-2/4-U | 1.1/0.25 | 6740/3370 | 45/12 | 20.0/10.0 | 2880/1440 | -25...+55 °C | 64/49 |
| | | | Axis-Jet-CI-355M-2/4-U-300/2 | | | | | | 300 °C/2 h* | 64/49 |
| | | | Axis-Jet-CI-355M-2/4-U-400/2 | | 5360/2680 | 29/8 | 15.9/8 | | 400 °C/2 h* | 67/52 |
| | | 1 | Axis-Jet-CI-355-2-R | 1.1 | 5810 | 34 | 17.3 | 2880 | -25...+55 °C | 68 |
| | | | Axis-Jet-CI-355-2-R-300/2 | | | | | | 300 °C/2 h* | 68 |
| | | | Axis-Jet-CI-355-2-R-400/2 | | 5160 | 27 | 15.3 | | 400 °C/2 h* | 70 |
| | | 2 | Axis-Jet-CI-355-2/4-R | 1.1/0.25 | 5810/2900 | 34/9 | 17.3/8.6 | 2810/1390 | -25...+55 °C | 68/53 |
| | | | Axis-Jet-CI-355-2/4-R-300/2 | | | | | | 300 °C/2 h* | 68/53 |
| | | | Axis-Jet-CI-355-2/4-R-400/2 | | 5160/2580 | 27/7 | 15.3/7.7 | | 400 °C/2 h* | 70/55 |
| 400 | Unidirectional | 1 | Axis-Jet-CI-400-2-U | 1.1 | 8500 | 57 | 20.0 | 2880 | -25...+55 °C | 69 |
| | | | Axis-Jet-CI-400-2-U-300/2 | | | | | | 300 °C/2 h* | 69 |
| | | | Axis-Jet-CI-400-2-U-400/2 | | 6970 | 39 | 16.4 | | 400 °C/2 h* | 70 |
| | | 2 | Axis-Jet-CI-400M-2-U | 2.2 | 9870 | 77 | 23.2 | 2880 | -25...+55 °C | 67 |
| | | | Axis-Jet-CI-400M-2-U-300/2 | | | | | | 300 °C/2 h* | 67 |
| | | | Axis-Jet-CI-400M-2-U-400/2 | | 8500 | 57 | 20 | | 400 °C/2 h* | 69 |
| | | | Axis-Jet-CI-400-2/4-U | 1.1/0.25 | 8500/4250 | 57/15 | 20.0/10.0 | 2880/1440 | -25...+55 °C | 69/54 |
| | | | Axis-Jet-CI-400-2/4-U-300/2 | | | | | | 300 °C/2 h* | 69/54 |
| | | | Axis-Jet-CI-400-2/4-U-400/2 | | 6970/3490 | 39/10 | 16.4/8.2 | | 400 °C/2 h* | 70/55 |
| | | Reversible | Axis-Jet-CI-400M-2/4-U | 2.2/0.5 | 9870/4930 | 77/20 | 23.2/11.6 | 2880/1440 | -25...+55 °C | 67/52 |
| | | | Axis-Jet-CI-400M-2/4-U-300/2 | | | | | | 300 °C/2 h* | 67/52 |
| | | | Axis-Jet-CI-400M-2/4-U-400/2 | | 8500/4250 | 57/15 | 20/10 | | 400 °C/2 h* | 69/54 |
| | | 1 | Axis-Jet-CI-400-2-R | 1.5 | 8290 | 54 | 19.5 | 2880 | -25...+55 °C | 70 |
| | | | Axis-Jet-CI-400-2-R-300/2 | | | | | | 300 °C/2 h* | 70 |
| | | | Axis-Jet-CI-400-2-R-400/2 | | 7140 | 40 | 16.8 | | 400 °C/2 h* | 71 |
| | | 2 | Axis-Jet-CI-400-2/4-R | 1.5/0.37 | 8290/4140 | 54/14 | 19.5/9.7 | 2880/1440 | -25...+55 °C | 70/55 |
| | | | Axis-Jet-CI-400-2/4-R-300/2 | | | | | | 300 °C/2 h* | 70/55 |
| | | | Axis-Jet-CI-400-2/4-R-400/2 | | 7140/3570 | 40/10 | 16.8/8.4 | | 400 °C/2 h* | 71/56 |

* Smoke extraction mode: once for two hours

AXIS-JET-CI

| Ø [mm] | Air flow direction | Number of speeds | Model | Power [kW] | Max. air flow [m³/h] | Fan pull [N] | Air speed [m/s] | RPM | Operating temperature [°C] | Sound pressure LpA, dB in 3 m |
|--------|--------------------|------------------|------------------------------|------------|----------------------|--------------|-----------------|-----------|----------------------------|-------------------------------|
| 450 | Unidirectional | 1 | Axis-Jet-CI-450-2-U | 1.5 | 10400 | 67 | 19.3 | 2880 | -25...+55 °C | 67 |
| | | | Axis-Jet-CI-450-2-U-300/2 | | | | | | 300 °C/2 h* | 67 |
| | | | Axis-Jet-CI-450-2-U-400/2 | | 9520 | 56 | 17.6 | | 400 °C/2 h* | 67 |
| | | | Axis-Jet-CI-450M-2-U | 2.2 | 12800 | 100 | 23.3 | 2850 | -25...+55 °C | 70 |
| | | | Axis-Jet-CI-450M-2-U-300/2 | | | | | | 300 °C/2 h* | 70 |
| | | | Axis-Jet-CI-450M-2-U-400/2 | | 11600 | 84 | 21.5 | | 400 °C/2 h* | 70 |
| | | 3 | Axis-Jet-CI-450S-2-U | 3 | 14100 | 124 | 26.2 | 2890 | -25...+55 °C | 69 |
| | | | Axis-Jet-CI-450S-2-U-300/2 | | | | | | 300 °C/2 h* | 69 |
| | | | Axis-Jet-CI-450S-2-U-400/2 | | 12300 | 94 | 22.7 | | 400 °C/2 h* | 72 |
| | | | Axis-Jet-CI-450-2/4-U | 1.5/0.37 | 10400/5220 | 67/17 | 19.3/9.7 | 2880/1440 | -25...+55 °C | 67/52 |
| | | | Axis-Jet-CI-450-2/4-U-300/2 | | | | | | 300 °C/2 h* | 67/52 |
| | | | Axis-Jet-CI-450-2/4-U-400/2 | | 9520/4760 | 56/14 | 17.6/8.8 | | 400 °C/2 h* | 67/52 |
| | | 2 | Axis-Jet-CI-450M-2/4-U | 2.2/0.5 | 12800/6290 | 100/25 | 23.3/11.7 | 2880/1440 | -25...+55 °C | 70/55 |
| | | | Axis-Jet-CI-450M-2/4-U-300/2 | | | | | | 300 °C/2 h* | 70/55 |
| | | | Axis-Jet-CI-450M-2/4-U-400/2 | | 11600/6070 | 84/23 | 21.5/11.3 | | 400 °C/2 h* | 70/55 |
| | | | Axis-Jet-CI-450S-2/4-U | 3.1/0.8 | 14100/7070 | 124/31 | 26.2/13.1 | 2880/1440 | -25...+55 °C | 69/54 |
| | | | Axis-Jet-CI-450S-2/4-U-300/2 | | | | | | 300 °C/2 h* | 69/54 |
| | | | Axis-Jet-CI-450S-2/4-U-400/2 | | 12400/6200 | 95/24 | 22.9/11.5 | | 400 °C/2 h* | 72/57 |
| | Reversible | 1 | Axis-Jet-CI-450-2-R | 1.5 | 9280 | 54 | 17.2 | 2880 | -25...+55 °C | 73 |
| | | | Axis-Jet-CI-450-2-R-300/2 | | | | | | 300 °C/2 h* | 73 |
| | | | Axis-Jet-CI-450-2-R-400/2 | | 8560 | 46 | 15.8 | | 400 °C/2 h* | 71 |
| | | | Axis-Jet-CI-450M-2-R | 2.2 | 10400 | 67 | 19.2 | 2850 | -25...+55 °C | 72 |
| | | | Axis-Jet-CI-450M-2-R-300/2 | | | | | | 300 °C/2 h* | 72 |
| | | | Axis-Jet-CI-450M-2-R-400/2 | | 10300 | 66 | 19.1 | | 400 °C/2 h* | 73 |
| | | 3 | Axis-Jet-CI-450S-2-R | 3 | 12800 | 102 | 23.7 | 2890 | -25...+55 °C | 74 |
| | | | Axis-Jet-CI-450S-2-R-300/2 | | | | | | 300 °C/2 h* | 74 |
| | | | Axis-Jet-CI-450S-2-R-400/2 | | 11200 | 78 | 20.8 | | 400 °C/2 h* | 74 |
| | | | Axis-Jet-CI-450-2/4-R | 1.5/0.37 | 9280/4640 | 54/14 | 17.2/8.6 | 2880/1440 | -25...+55 °C | 73/58 |
| | | | Axis-Jet-CI-450-2/4-R-300/2 | | | | | | 300 °C/2 h* | 73/58 |
| | | | Axis-Jet-CI-450-2/4-R-400/2 | | 8560/4280 | 46/12 | 15.8/7.9 | | 400 °C/2 h* | 71/56 |
| | | 2 | Axis-Jet-CI-450M-2/4-R | 2.2/0.5 | 10400/5190 | 67/17 | 19.2/9.6 | 2880/1440 | -25...+55 °C | 72/57 |
| | | | Axis-Jet-CI-450M-2/4-R-300/2 | | | | | | 300 °C/2 h* | 72/57 |
| | | | Axis-Jet-CI-450M-2/4-R-400/2 | | 10300/5160 | 66/17 | 19.1/ 9.6 | | 400 °C/2 h* | 73/58 |
| | | | Axis-Jet-CI-450S-2/4-R | 3.1/0.8 | 12800/6400 | 102/26 | 23.7/11.9 | 2880/1440 | -25...+55 °C | 74/59 |
| | | | Axis-Jet-CI-450S-2/4-R-300/2 | | | | | | 300 °C/2 h* | 74/59 |
| | | | Axis-Jet-CI-450S-2/4-R-400/2 | | 11200/5610 | 78/20 | 20.8/10.4 | | 400 °C/2 h* | 74/59 |
| 500 | Unidirectional | 2 | Axis-Jet-CI-500-2/4-U | 3.1/0.8 | 16200/8120 | 132/34 | 24.3/12.2 | 2880/1440 | -25...+55 °C | 72/57 |
| | | | Axis-Jet-CI-500-2/4-U-300/2 | | | | | | 300 °C/2 h* | 72/57 |
| | | | Axis-Jet-CI-500-2/4-U-400/2 | | 14900/7430 | 111/28 | 22.2/11.1 | | 400 °C/2 h* | 70/55 |
| | | 4.4/1.1 | Axis-Jet-CI-500M-2/4-U | 4.4/1.1 | 18500/9240 | 171/43 | 27.7/13.8 | 2880/1440 | -25...+55 °C | 72/57 |
| | | | Axis-Jet-CI-500M-2/4-U-300/2 | | | | | | 300 °C/2 h* | 72/57 |
| | | | Axis-Jet-CI-500M-2/4-U-400/2 | | 17200/8600 | 148/37 | 25.8/12.9 | | 400 °C/2 h* | 74/59 |
| | Reversible | 2 | Axis-Jet-CI-500-2/4-R | 3.1/0.8 | 14500/7250 | 105/27 | 21.7/10.8 | 2880/1440 | -25...+55 °C | 77/62 |
| | | | Axis-Jet-CI-500-2/4-R-300/2 | | | | | | 300 °C/2 h* | 77/62 |
| | | | Axis-Jet-CI-500-2/4-R-400/2 | | 13600/6790 | 93/24 | 20.3/10.2 | | 400 °C/2 h* | 75/60 |
| | | 4.4/1.1 | Axis-Jet-CI-500M-2/4-R | 4.4/1.1 | 16600/8310 | 138/35 | 24.8/12.4 | 2880/1440 | -25...+55 °C | 76/61 |
| | | | Axis-Jet-CI-500M-2/4-R-300/2 | | | | | | 300 °C/2 h* | 76/61 |
| | | | Axis-Jet-CI-500M-2/4-R-400/2 | | 15900/7940 | 127/32 | 23.8/11.9 | | 400 °C/2 h* | 77/62 |
| 560 | Unidirectional | 2 | Axis-Jet-CI-560-2/4-U | 4.4/1.1 | 20200/10100 | 167/42 | 24.7/12.4 | 2880/1440 | -25...+55 °C | 74/59 |
| | | | Axis-Jet-CI-560-2/4-U-300/2 | | | | | | 300 °C/2 h* | 74/59 |
| | | | Axis-Jet-CI-560-2/4-U-400/2 | | 18000/ 9010 | 132/34 | 22/11 | | 400 °C/2 h* | 74/59 |
| | | 8/2 | Axis-Jet-CI-560M-2/4-U | 8/2 | 25100/12500 | 257/64 | 30.7/15.3 | 2880/1440 | -25...+55 °C | 76/61 |
| | | | Axis-Jet-CI-560M-2/4-U-300/2 | | | | | | 300 °C/2 h* | 76/61 |
| | | | Axis-Jet-CI-560M-2/4-U-400/2 | | 24300/12200 | 242/61 | 29.8/14.9 | | 400 °C/2 h* | 77/62 |
| | Reversible | 2 | Axis-Jet-CI-560-2/4-R | 4.4/1.1 | 16800/8410 | 115/29 | 20.5/10.3 | 2880/1440 | -25...+55 °C | 77/62 |
| | | | Axis-Jet-CI-560-2/4-R-300/2 | | | | | | 300 °C/2 h* | 77/62 |
| | | | Axis-Jet-CI-560-2/4-R-400/2 | | 17200/8900 | 121/33 | 21/10.9 | | 400 °C/2 h* | 77/62 |
| | | 6/1.5 | Axis-Jet-CI-560M-2/4-R | 6/1.5 | 21100/10500 | 182/46 | 25.8/12.9 | 2880/1440 | -25...+55 °C | 79/64 |
| | | | Axis-Jet-CI-560M-2/4-R-300/2 | | | | | | 300 °C/2 h* | 79/64 |
| | | | Axis-Jet-CI-560M-2/4-R-400/2 | | 18800/9380 | 145/36 | 23/11.5 | | 400 °C/2 h* | 77/62 |

* Smoke extraction mode: once for two hours

AXIS-JET-CI

| Ø [mm] | Air flow direction | Number of speeds | Model | Power [kW] | Max. air flow [m³/h] | Fan pull [N] | Air speed [m/s] | RPM | Operating temperature [°C] | Sound pressure LpA, dB in 3 m |
|--------|--------------------|------------------|------------------------------|------------|----------------------|--------------|-----------------|-----------|----------------------------|-------------------------------|
| 630 | Unidirectional | 2 | Axis-Jet-CI-630-2/4-U | 12/3 | 31500/15700 | 320/80 | 30.4/15.2 | 2880/1440 | -25...+55 °C | 79/64 |
| | | | Axis-Jet-CI-630-2/4-U-300/2 | | | | | | 300 °C/2 h* | 79/64 |
| | | | Axis-Jet-CI-630-2/4-U-400/2 | | | | | | 400 °C/2 h* | 77/62 |
| | | | Axis-Jet-CI-630M-2/4-U | 16/4 | 35200/17650 | 399/101 | 34/17 | 2880/1440 | -25...+55 °C | 81/66 |
| | | | Axis-Jet-CI-630M-2/4-U-300/2 | | | | | | 300 °C/2 h* | 81/66 |
| | | | Axis-Jet-CI-630M-2/4-U-400/2 | | | | | | 400 °C/2 h* | 78/63 |
| | Reversible | 2 | Axis-Jet-CI-630-2/4-R | 12/3 | 26700/13400 | 230/58 | 25.8/12.9 | 2880/1440 | -25...+55 °C | 85/70 |
| | | | Axis-Jet-CI-630-2/4-R-300/2 | | | | | | 300 °C/2 h* | 85/70 |
| | | | Axis-Jet-CI-630-2/4-R-400/2 | | | | | | 400 °C/2 h* | 82/67 |
| | | | Axis-Jet-CI-630M-2/4-R | 16/4 | 29100/14600 | 274/69 | 28.2/14.1 | 2880/1440 | -25...+55 °C | 86/71 |
| | | | Axis-Jet-CI-630M-2/4-R-300/2 | | | | | | 300 °C/2 h* | 86/71 |
| | | | Axis-Jet-CI-630M-2/4-R-400/2 | | | | | | 400 °C/2 h* | 82/67 |

* Smoke extraction mode: once for two hours

AXIS-JET-VI

| Ø [mm] | Air flow direction | Number of speeds | Model | Power [kW] | Max. air flow [m³/h] | Fan pull [N] | Air speed [m/s] | RPM | Operating temperature °C | Sound pressure LpA, dB in 3 m |
|--------|--------------------|------------------|------------------------------|------------|----------------------|--------------|-----------------|-----------|--------------------------|-------------------------------|
| 315 | Unidirectional | 1 | Axis-Jet-VI-315-2-U | 0.55 | 4520 | 26 | 17.2 | 2880 | -25...+55 °C | 63 |
| | | | Axis-Jet-VI-315-2-U-300/2 | | | | | | 300 °C/2 h* | 63 |
| | | | Axis-Jet-VI-315-2-U-400/2 | 0.75 | 3250 | 14 | 12.4 | 2880 | 400 °C/2 h* | 63 |
| | | | Axis-Jet-VI-315M-2-U | | 4990 | 32 | 19 | | -25...+55 °C | 64 |
| | | | Axis-Jet-VI-315M-2-U-300/2 | | | | | | 300 °C/2 h* | 64 |
| | | 2 | Axis-Jet-VI-315M-2-U-400/2 | 0.75 | 3590 | 17 | 13.6 | 2880 | 400 °C/2 h* | 65 |
| | | | Axis-Jet-VI-315-2/4-U | | 4520/2260 | 26/7 | 17.2/8.6 | 2880/1440 | -25...+55 °C | 63/48 |
| | | | Axis-Jet-VI-315-2/4-U-300/2 | 0.55/0.11 | 3250/1630 | 14/4 | 12.4/6.18 | | 300 °C/2 h* | 63/48 |
| | | | Axis-Jet-VI-315M-2/4-U | | 4990/2490 | 32/8 | 19/9.5 | 2880/1440 | -25...+55 °C | 64/49 |
| | | | Axis-Jet-VI-315M-2/4-U-300/2 | | | | | | 300 °C/2 h* | 64/49 |
| | Reversible | 1 | Axis-Jet-VI-315M-2/4-U-400/2 | 0.8/0.2 | 3590/1790 | 17/5 | 13.6/6.8 | 2880/1440 | 400 °C/2 h* | 65/50 |
| | | | Axis-Jet-VI-315-2-R | | | | | | -25...+55 °C | 67 |
| | | | Axis-Jet-VI-315-2-R-300/2 | | 4190 | 23 | 15.9 | 2880 | 300 °C/2 h* | 67 |
| | | 2 | Axis-Jet-VI-315-2-R-400/2 | 0.55/0.11 | 3010 | 12 | 11.4 | | 400 °C/2 h* | 68 |
| | | | Axis-Jet-VI-315-2/4-R | | 4180/2100 | 23/6 | 15.9/7.9 | 2880/1440 | -25...+55 °C | 67/52 |
| | | | Axis-Jet-VI-315-2/4-R-300/2 | | | | | | 300 °C/2 h* | 67/52 |
| | | | Axis-Jet-VI-315-2/4-R-400/2 | | 3010/1510 | 12/3 | 11.4/5.7 | | 400 °C/2 h* | 68/53 |
| 355 | Unidirectional | 1 | Axis-Jet-VI-355-2-U | 0.75 | 5830 | 34 | 17.3 | 2880 | -25...+55 °C | 65 |
| | | | Axis-Jet-VI-355-2-U-300/2 | | | | | | 300 °C/2 h* | 65 |
| | | | Axis-Jet-VI-355-2-U-400/2 | 1.1 | 4880 | 24 | 14.5 | 2880 | 400 °C/2 h* | 65 |
| | | | Axis-Jet-VI-355M-2-U | | 6740 | 45 | 20.0 | | -25...+55 °C | 64 |
| | | | Axis-Jet-VI-355M-2-U-300/2 | | | | | | 300 °C/2 h* | 64 |
| | | 2 | Axis-Jet-VI-355M-2-U-400/2 | 1.1 | 5360 | 29 | 15.9 | 2880 | 400 °C/2 h* | 67 |
| | | | Axis-Jet-VI-355-2/4-U | | 5830/3000 | 34/9 | 17.3/8.9 | 2880/1440 | -25...+55 °C | 65/50 |
| | | | Axis-Jet-VI-355-2/4-U-300/2 | 0.8/0.2 | 4880/2440 | 24/6 | 14.5/7.3 | | 300 °C/2 h* | 65/50 |
| | | | Axis-Jet-VI-355-2/4-U-400/2 | | | | | 2880/1440 | 400 °C/2 h* | 65/50 |
| | | | Axis-Jet-VI-355M-2/4-U | | 6740/3370 | 45/12 | 20.0/10.0 | | -25...+55 °C | 64/49 |
| | Reversible | 1 | Axis-Jet-VI-355M-2/4-U-300/2 | 1.1/0.25 | 5360/2680 | 29/8 | 15.9/8 | 2880/1440 | 300 °C/2 h* | 64/49 |
| | | | Axis-Jet-VI-355M-2/4-U-400/2 | | | | | | 400 °C/2 h* | 67/52 |
| | | | Axis-Jet-VI-355-2-R | | | | | | -25...+55 °C | 68 |
| | | 2 | Axis-Jet-VI-355-2-R-300/2 | 1.1 | 5810 | 34 | 17.3 | 2880 | 300 °C/2 h* | 68 |
| | | | Axis-Jet-VI-355-2-R-400/2 | | 5160 | 27 | 15.3 | | 400 °C/2 h* | 70 |
| | | | Axis-Jet-VI-355-2/4-R | | 5810/2900 | 34/9 | 17.3/8.6 | 2810/1390 | -25...+55 °C | 68/53 |
| | | | Axis-Jet-VI-355-2/4-R-300/2 | 1.1/0.25 | | | | | 300 °C/2 h* | 68/53 |
| | | | Axis-Jet-VI-355-2/4-R-400/2 | | 5160/2580 | 27/7 | 15.3/7.7 | | 400 °C/2 h* | 70/55 |
| 400 | Unidirectional | 1 | Axis-Jet-VI-400-2-U | 1.1 | 8500 | 57 | 20.0 | 2880 | -25...+55 °C | 69 |
| | | | Axis-Jet-VI-400-2-U-300/2 | | | | | | 300 °C/2 h* | 69 |
| | | | Axis-Jet-VI-400-2-U-400/2 | 2.2 | 6970 | 39 | 16.4 | 2880 | 400 °C/2 h* | 70 |
| | | | Axis-Jet-VI-400M-2-U | | 9870 | 77 | 23.2 | | -25...+55 °C | 67 |
| | | | Axis-Jet-VI-400M-2-U-300/2 | | | | | | 300 °C/2 h* | 67 |
| | | 2 | Axis-Jet-VI-400M-2-U-400/2 | 2.2 | 8500 | 57 | 20 | 2880 | 400 °C/2 h* | 69 |
| | | | Axis-Jet-VI-400-2/4-U | | 8500/4250 | 57/15 | 20.0/10.0 | 2880/1440 | -25...+55 °C | 69/54 |
| | | | Axis-Jet-VI-400-2/4-U-300/2 | 1.1/0.25 | 6970/3490 | 39/10 | 16.4/8.2 | | 300 °C/2 h* | 69/54 |
| | | | Axis-Jet-VI-400-2/4-U-400/2 | | | | | 2880/1440 | 400 °C/2 h* | 70/55 |
| | | | Axis-Jet-VI-400M-2/4-U | | 9870/4930 | 77/20 | 23.2/11.6 | | -25...+55 °C | 67/52 |
| | Reversible | 1 | Axis-Jet-VI-400M-2/4-U-300/2 | 2.2/0.5 | 8500/4250 | 57/15 | 20/10 | 2880/1440 | 300 °C/2 h* | 67/52 |
| | | | Axis-Jet-VI-400M-2/4-U-400/2 | | | | | | 400 °C/2 h* | 69/54 |
| | | | Axis-Jet-VI-400-2-R | | | | | | -25...+55 °C | 70 |
| | | 2 | Axis-Jet-VI-400-2-R-300/2 | 1.5 | 8290 | 54 | 19.5 | 2880 | 300 °C/2 h* | 70 |
| | | | Axis-Jet-VI-400-2-R-400/2 | | 7140 | 40 | 16.8 | | 400 °C/2 h* | 71 |
| | | | Axis-Jet-VI-400-2/4-R | | 8290/4140 | 54/14 | 19.5/9.7 | 2880/1440 | -25...+55 °C | 70/55 |
| | | | Axis-Jet-VI-400-2/4-R-300/2 | 1.5/0.37 | | | | | 300 °C/2 h* | 70/55 |
| | | | Axis-Jet-VI-400-2/4-R-400/2 | | 7140/3570 | 40/10 | 16.8/8.4 | | 400 °C/2 h* | 71/56 |

* Smoke extraction mode: once for two hours